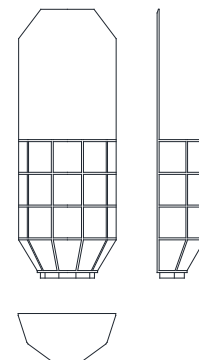


# Haku console with mirror

Woak



Design: Christophe De La Fontaine  
 Construction: Easy to assemble  
 Material: Walnut, oak or coloured ash  
 Surface treatment: Oil  
 Packing unit: 2



W	D	H	Packing (cm)	Volume (m <sup>3</sup> )	Weight (kg)	
71.5 cm	x 35 cm	x 197 cm	107 / 77 / 40	0.330	46	Package 1
			101 / 77 / 8	0.062	10	Package 2 (Mirror)